

Pro Carbon Track - FAQ



The newest of our Track frames is the fully loaded “Pro Carbon”, which comes complete with carbon aero seatpost seatpost clamp and full carbon forks.

As a rule, full carbon track bikes are the “bees knees” of track bikes, with a stiffer more power efficient ride, plenty of fast maneuverability and the best power to weight ratio of all bikes. This one is no exception.

Designed to cater for every type of rider, from pursuitters, sprinters, points/scratch and TT riders with sizes to fit all but the most extreme (sub 5 foot and post 6 foot 8) and as you can see from the geometry chart below, the frames have tight sharp angles for a responsive and thoroughly high performance, high class ride. Top UK track cyclists Janet Birkmyre and Richard Prince have been riding the Pro Carbon Track since they arrived early this year, with Jan showing top form on it to win 5 National Masters Track titles.

Geometry

	XS(52)	S(54)	M(56)	L(58)
Seat Tube (mm) - Centre of BB to Top Seat Tube	520	540	560	580
Seat Tube (mm) - Centre to Centre	482	493	510	532
Equivalent Top Tube Length (mm) - Centre to Centre	517	540	560	580
Seat Angle (deg)	74	74	74	74
Head Angle (deg)	75	75	75	75
BB Height - Ground Clearance (mm) (approx)	290	290	290	290
Head Tube Length (mm)	110	110	130	150

Typical Frame Weights

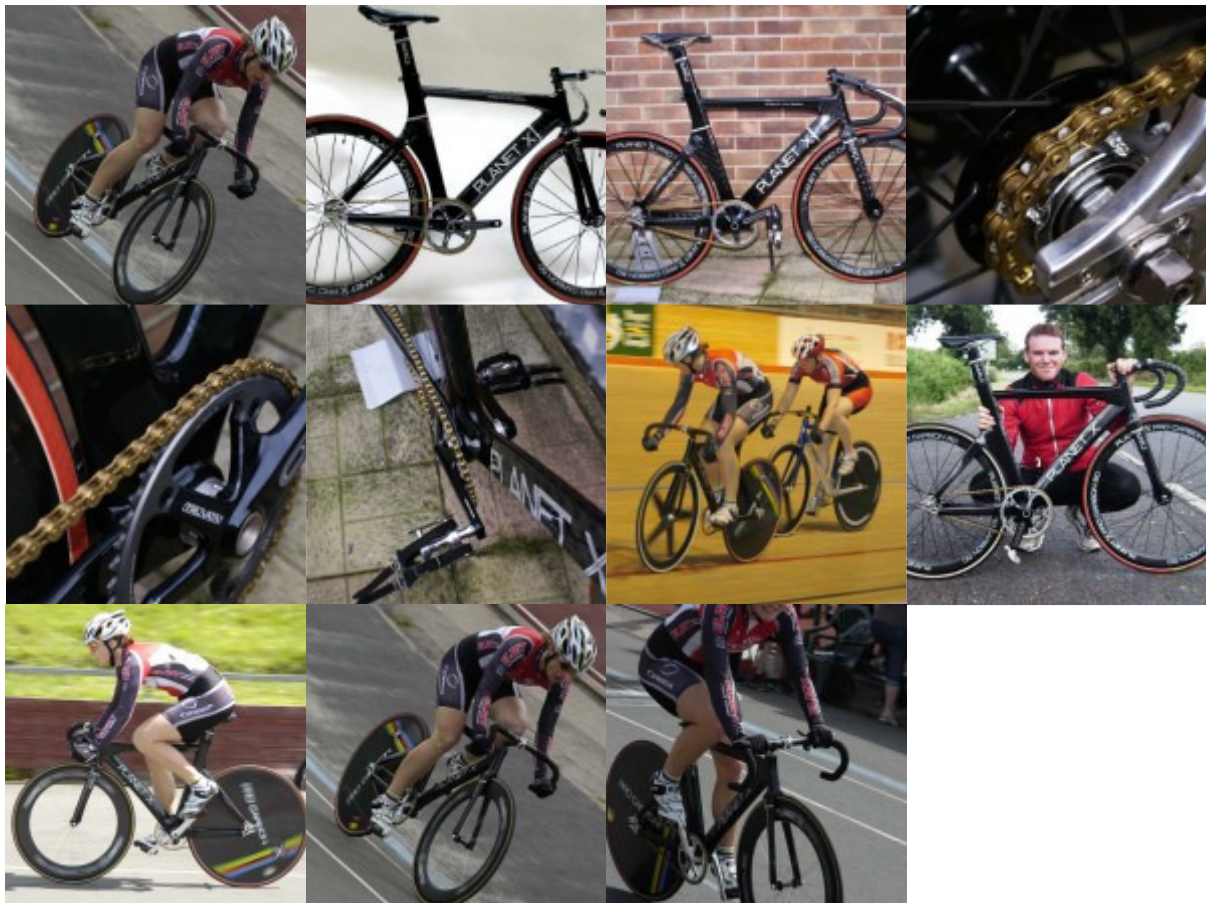
A rough guide to which frame size to go for....

Rider Height - 5'2" to 5'6" - X-SMALL
Rider Height - 5'5" to 5'9" - Small
Rider Height - 5'10" to 6'2" - MEDIUM
Rider Height - 6'0" to 6'6" - LARGE

NOTE:- All frame size recommendations are approximate and getting a good fit will depend on the correct choice of stem length and correct bike set-up for the rider.

Correct frame size choice can also vary greatly with riders torso length.

Gallery



Frame Details

Seatpost Size - N/A - Pro Carbon Track Seatpost only (included with fuselage package)

Seat Clamp Size - N/A stealth Pro Carbon seat clamp only (included with fuselage package)

Wheels - 700C. 120mm rear axle spacing, 100mm front axle spacing

Bottle Bosses - None

Bottom Bracket Shell BSA / British threaded

Rear drop-outs with axle screw adjustors and replaceable steel drop-out plates.

Fork, seatpost and seatclamp are included in the price.

Headset is not included - please select a 1-1/8" integrated headset from the [‘Steering’](#) section